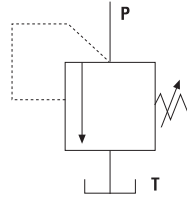


► **BDBD DİREKT UYARILI BASINÇ EMNİYET VALFLERİ**

BDBD DIRECT OPERATED PRESSURE RELIEF VALVES

- BDBD Serisi emniyet valfleri, hidrolik sistemlerde basıncı sınırlandırmak için kullanılan direk uyarılı valflerdir. Dizayn, hareketli popet tip ve bilyalı tip olarak ayrılabilir. 7 kademede basınç ayarı mümkündür. 25,50,100,200, 315,400 Bar. Yüksek performans, emniyetli çalışma, düşük ses ve uzun ömür özelliğine sahiptir. Bu seriler düşük akış sistemlerinde düşürücü valf ve boşaltma valfi olarak kullanılabilirler.

BDBD series relief valves are direct operated poppet type used to limit pressure in a hydraulic systems. The design can be divided into poppet (Max.400 bar) and ball (Max.630 bar) type. There are 7 pressure adjustment ranges available 25,50,100,200,315,400 bar. It has characteristics of compact structure, high performance, reliable work, low noise and long service life. These series direct operated pressure relief valves are applied to may lower flow systems.



BDBD	S	6	K	10	10	2	V
Direk uyarılı <i>Direct operated</i>	S : Ayarlanabilir vidalı ve koruma kapaklı H : El çevirmeli A : Kilitlenebilir tuşlu (sadece 6, 8, 10 için uygun) S : Adjustable screw and protective cap H : Handwheel A : Lockable handknob (Only available for 6, 8, 10)	Ölçü 6 (8) 10 (15) 20 (25) 30 Size 6 (8) 10 (15) 20 (25) 30	K : Dişli bağlantılı G : Boru hattı bağlantılı P : Pleyte bağlantılı K : Plug-in mounting G : Pipe line connection P : Subplate mounting	10 serisi (Basınç sınıfı: 25~400 Bar) 10 series (Pressure class: 25~400 Bar)	Kod yok : NBR keçe petrol yağları için V : FPM keçe fosfat ester için No code : NBR seals for petroleum oils V : FPM seals for phosphate ester	Kod yok : Inch dişli; 2 : Metrik dişli No code : Inch thread; 2 : Metric thread	Basınç aralığı (Bar) : 25, 50, 100, 200, 315, 400, 630 Pressure range (Bar) : 25, 50, 100, 200, 315, 400, 630

Teknik Bilgi / Technical Data

Ölçü / Size	6	8	10	15	20	25	30
Çalışma basıncı / Operating pressure (Bar)	315						
Maksimum debi / Max. flow rate (L/min)	35	60	80	150	200	250	300
Yağın sıcaklık aralığı / Fluid temperature (°C)	-20 ~ 70						
Filtreleme hassasiyeti / Filtration accuracy (µm)	25						

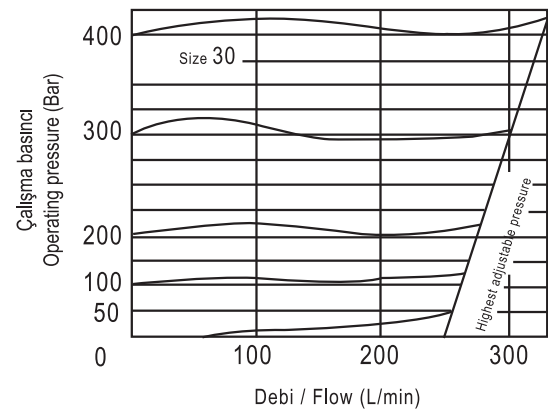
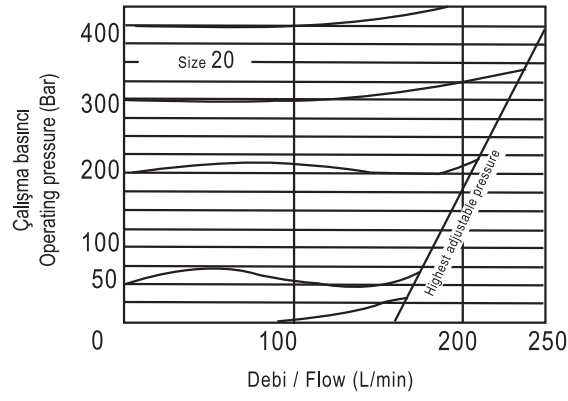
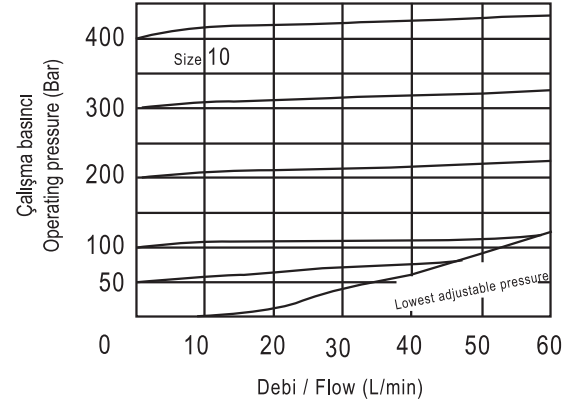
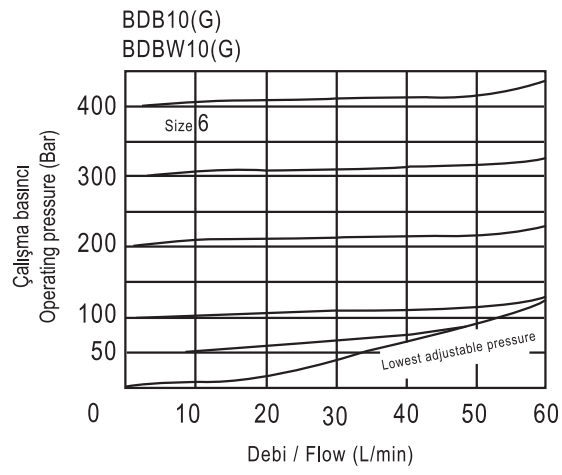
1

PRESSURE CONTROL VALVES

1

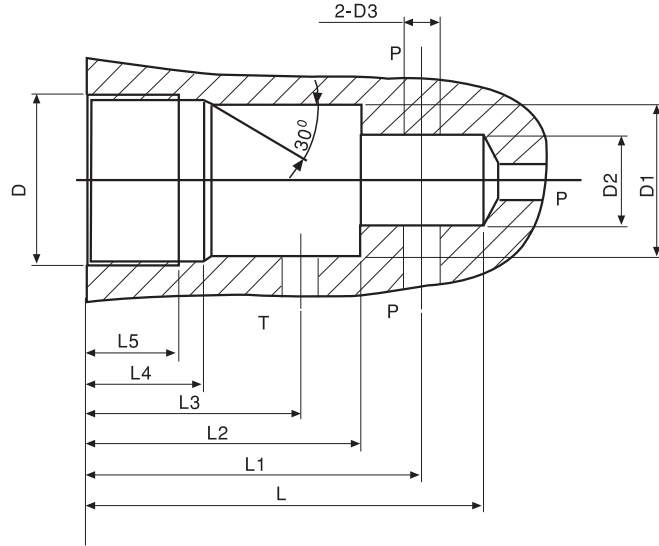
► BDBD Çalışma Eğrileri

BDBD Operating Curves



► DBD..K / Kartriç Ölçülendirmesi

DBD..K / Dimensions for Cartridge



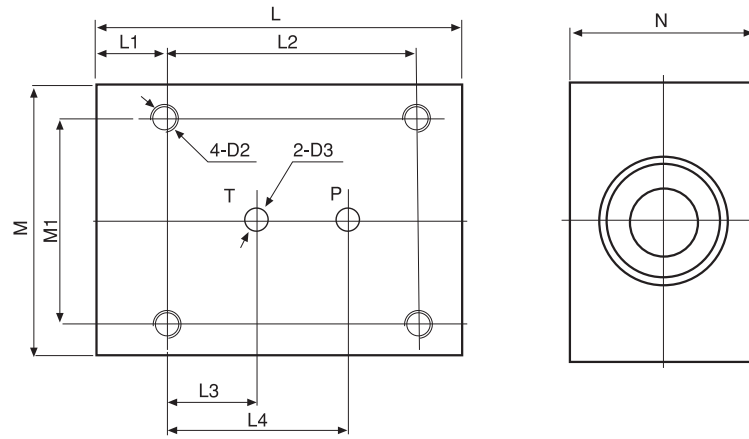
Teknik Bilgi / Technical Data

Ölçü / Size	D	D1	D2	D3	L	L1	L2	L3	L4	L5
6	M28x1,5	25H8	15	6	65	56,5 ± 1	45	35	19	15
10	M35x1,5	32H8	18,5	10	80	67,5 ± 1	52	41	23	18
20	M45x1,5	40H8	24	20	110	91,5 ± 1	70	54	27	21
30	M60x2	55H8	38,75	30	140	113,5 ± 1	84	60	29	23

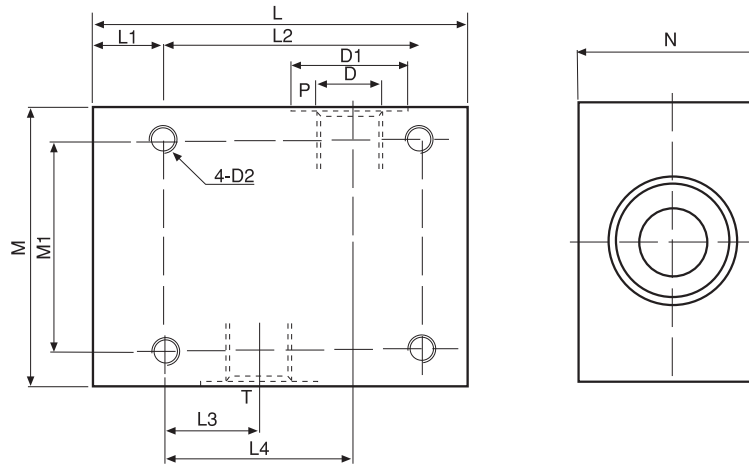
► BDBD Montaj Ölçüleri

BDBD Installation Dimensions

BDBD*P



BDBD*G



Teknik Bilgi / Technical Data

Ölçü / Size	L	L1	L2	L3	L4	M	M1	N	N1
6	80	15	55	20	40	60	45	45	25
(8) 10	100	20	70	21	49	80	60	60	40
(15) 20	135	20	100	34	65	100	70	70	50
(25) 30	180	25	130	35	85	130	100	90	60

Teknik Bilgi / Technical Data

D		D1	D2	D3	D4
Inch	Metric				
G 1/4"	M14x1,5	25	M6	6	M6
(G 3/8") G1/2"	(M18x1,5) M22x1,5	(28) 34	M8	(8) 10	M8
(G 3/4") G1"	(M27x2) M33x2	(42) 47	M8	(15) 20	M8
(G1 1/4") G1 1/2"	(M42x2) M48x2	(56) 61	M10	(25) 30	M10

1

PRESSURE CONTROL VALVES

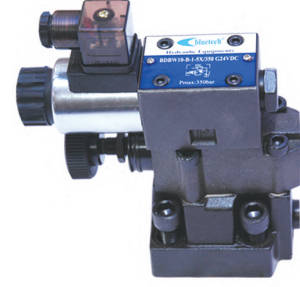
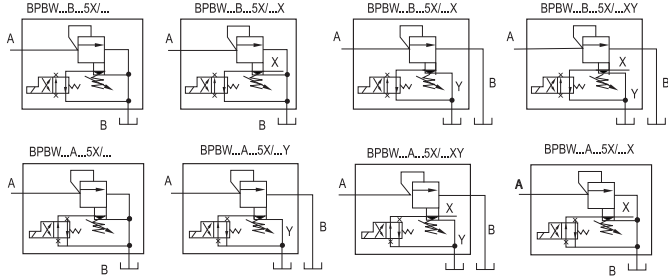
3

► BDB/BDBW 30/5X SERİSİ
PİLOT UYARILI BASINÇ EMNİYET VALFLERİ

BDB/BDBW 30/5X SERIES
PILOT OPERATED PRESSURE RELIEF VALVES

- BDB pilot uyarılı basınç emniyet valfi olup, bir ana valf ve basınç ayarlama elemanı bir pilot valfinden meydana gelir. BDBW pilot uyarılı selenoidli emniyet valfi sistem basıncını boşaltmaya elverişlidir.
- 5X serisinin performansı 30 serisinden daha güçlüdür.
- 5X serisi; hidrolik sistemlerin basıncını geniş bir aralıkta rahatça kontrol etmede kullanılabilir.
- Bu tipler, yüksek akış hızına bağlı olan hidrolik sistemler için uygundur.

BDB is pilot operated pressure relief valve, basically consist of; main valve and pilot valve with pressure adjustment element. BDBW is a pilot operated solenoid relief valve available to unload system pressure. The performance of 5X series is better than 30 series. The 5X series can be used to control the pressure of hydraulic systems smoothly in a wide range. This type is suitable for a hydraulic system which demands high flow rate.



BDBW 10 A G -1 - 30 / 315 U G24 N Z4/ 2/ V

Model

Kod yok : Yön kontrol valfsiz
W : Yön kontrol valfli

No code : Without directional valve
W : With directional valve

Ölçü / Size : 10, 20, 30
Pleyt bağlantılı : 10, 20, 30
Dişli bağlantılı : 8, 10, 16, 20, 25, 30
Subplate mounting : 10, 20, 30,
Threaded connection : 8, 10, 16, 20, 25, 30

A : Normalde kapalı B : Normalde açık
A : Normally closed B : Normally open

Kod yok : Pleyt bağlantılı
G : Diş bağlantılı

No code : Subplate mounting
G : Threaded connection

1 : Ayarlı düğmeli
2 : Ayarlanabilir vidalı ve koruma kapaklı
3 : Kilitli döner düğmeli

1 : Adjustable knob
2 : Adjustable hexagonal nut screw and protection cap
3 : Lockable rotary knob

Seri Numarası 30, 5X

Series Number 30, 5X

Basınç aralığı için tabloya bakınız.

See the below table for pressure range.

Kod yok : NBR Keçe petrol yağı için
V : FPM Keçe fosfat ester için

No code : NBR Seals for petroleum oils
V : FPM Seals for phosphate ester

Kod yok : Inch dişli 2 : Metrik dişli

No code : Inch thread 2 : Metric thread

Z4 : Soket Z5 : Büyük Soket
Z5L : Büyük ışıklı soket

Z4 : Quadrate plug Z5 : Big quadrate plug
Z5L : Big quadrate plug with light

Kod yok : Manuel kontrolsüz
N : Manuel kontrollü

No Code : Without manual override
N : With manual override

W220 : AC 220V; G24 : DC 24V

Kod Yok : Standart
U : Minimum açma basıncı

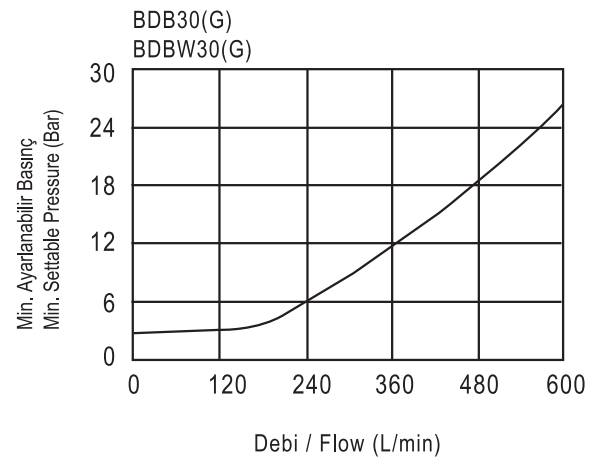
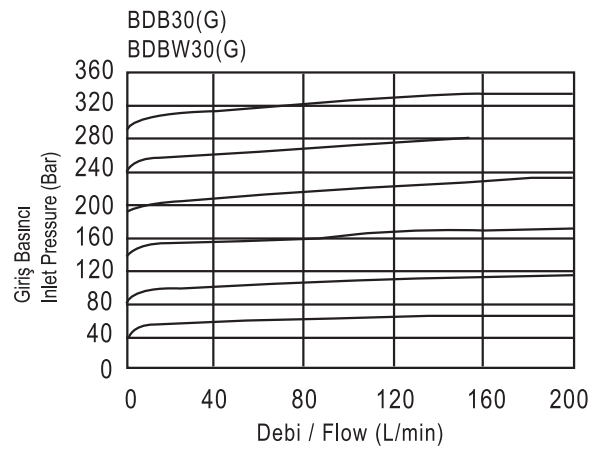
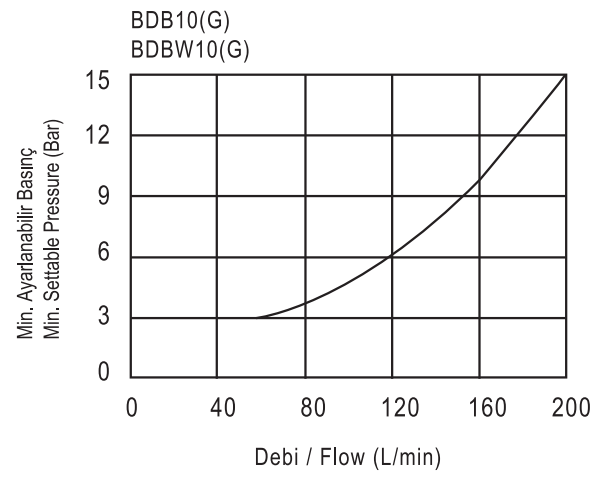
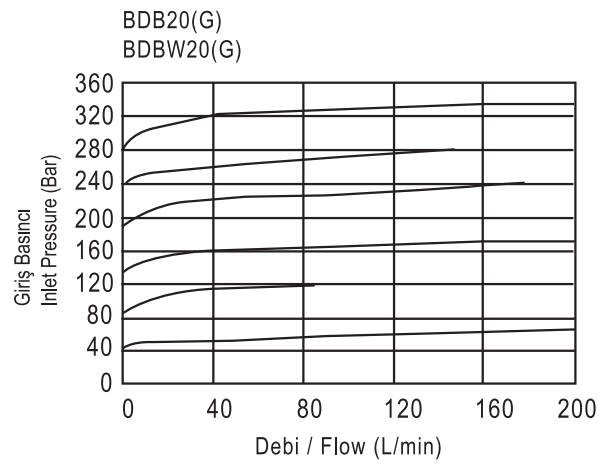
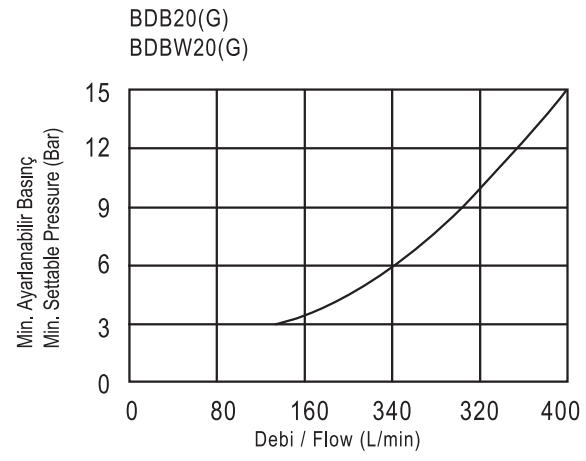
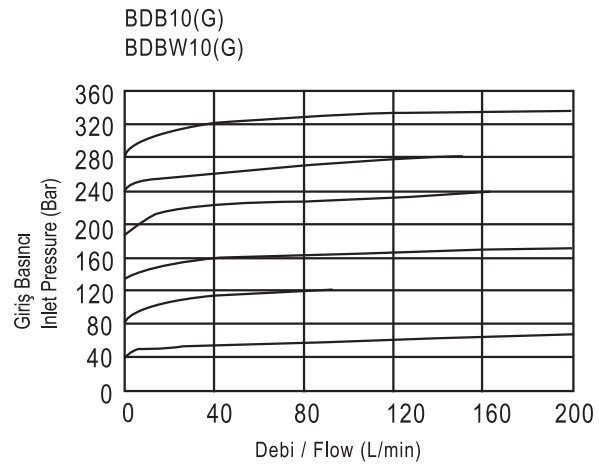
No Code : Standard
U : For min. opening pressure

Teknik Bilgi / Technical Data

Ölçü / Size	10		20		30	
Seri / Series	30	5x	30	5x	30	5x
Çalışma basıncı / Operating pressure (Bar)	315	350	315	350	315	350
Maksimum debi / Max. flow rate (L/min)	200	250	400	500	600	650
Yağın sıcaklık aralığı / Fluid temperature (°C)	-20 ~ 70					
Filtreleme hassasiyeti Filtration accuracy (µm)	25					

► BDB/BDBW 30/5X Basınç-Debi Eğrileri

BDB/BDBW 30/5X Operating Pressure Flow Curves



1

P
R
E
S
S
U
R
E

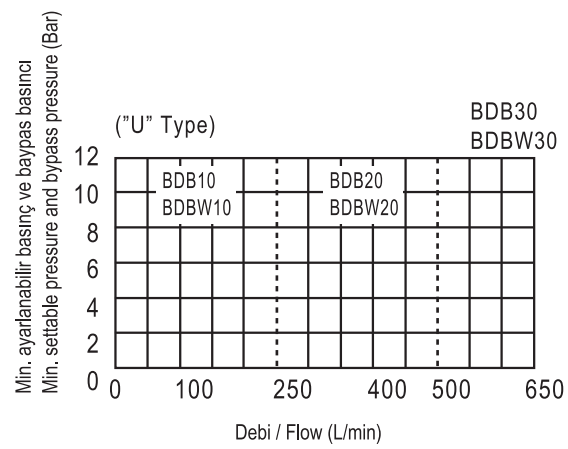
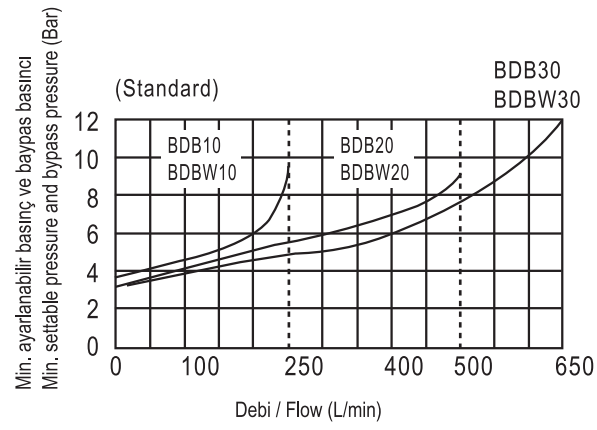
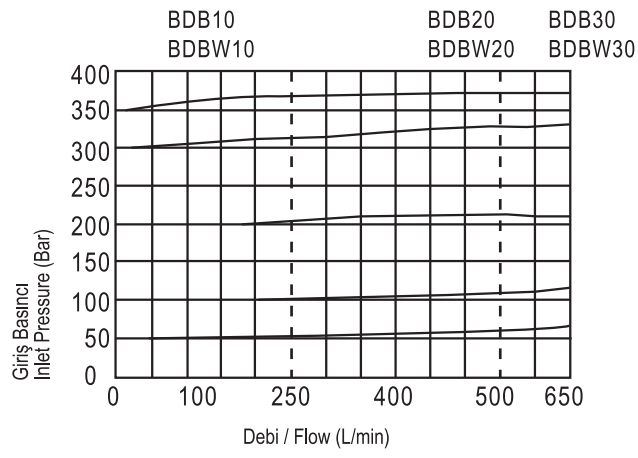
C
O
N
T
R
O
L

V
A
L
V
E
S

5

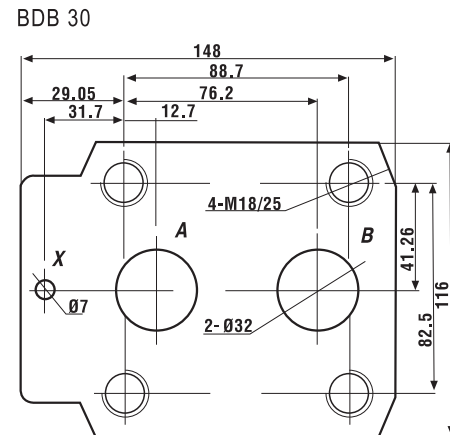
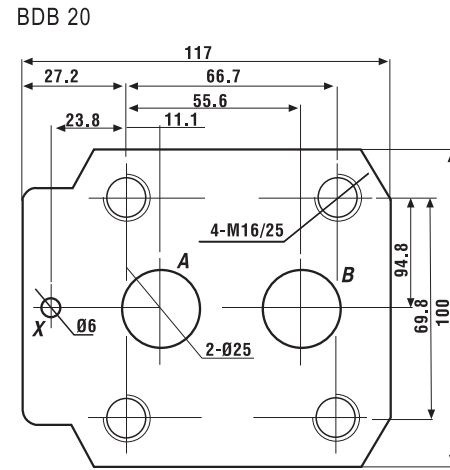
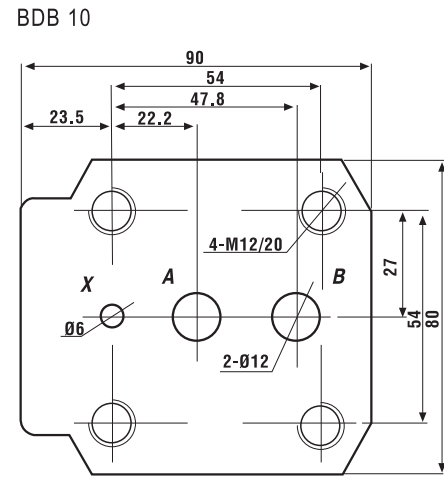
► BDB/BDBW Basınç ve Debi Eğrileri

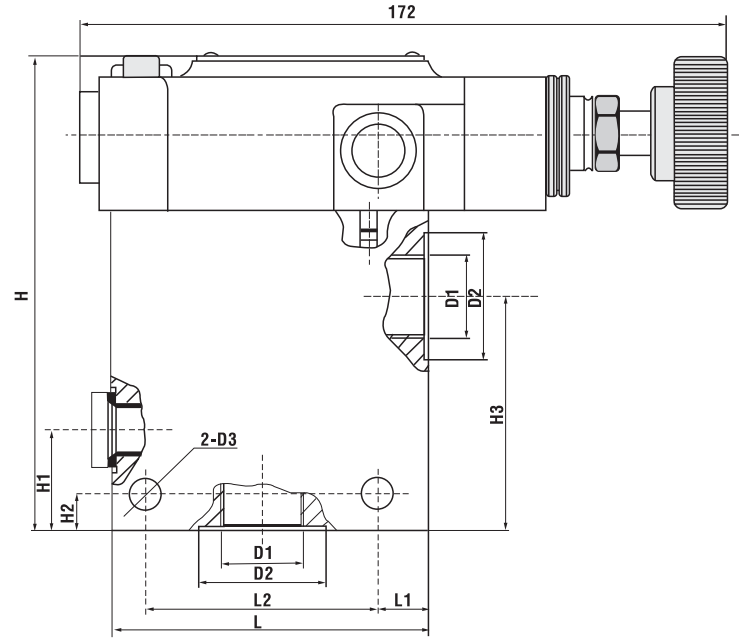
BDB/BDBW Operating & Flow Curves



► BDB/BDBW Pleyt Montajı

BDB/BDBW Subplate Mounting





Teknik Bilgi / Technical Data

Model	D1		D2	D3	L	L1	L2	H	H1	H2	H3
	Metric	Inch									
BDB8G	M18X1,5	G 3/8"	28								
BDB10G	M22X1,5	G 1/2"	34								
BDB15G	M27X2	G 3/4"	42								62
BDB20G	M33X2	G 1"	47	9	85	14	62	125	27	10	57
BDB25G	M42X2	G1 1/4"	58								
BDB30G	M48X2	G1 1/2"	65	11	100	18	72	138	42	13	66